

# PC/104 CONNECTORS

2.54mm Pitch

## SPECIFICATION

### Materials:

Moulding: Glass filled polyester UL94v-0  
 Contacts: Phosphor Bronze

### Finish:

Contacts: Gold flash over nickel

### Electrical:

Contact Resistance: 10 milliohms max.  
 Insulation Resistance: 5000 megohms min.  
 Current Rating: 1A  
 Voltage Proof: 1000 v ac

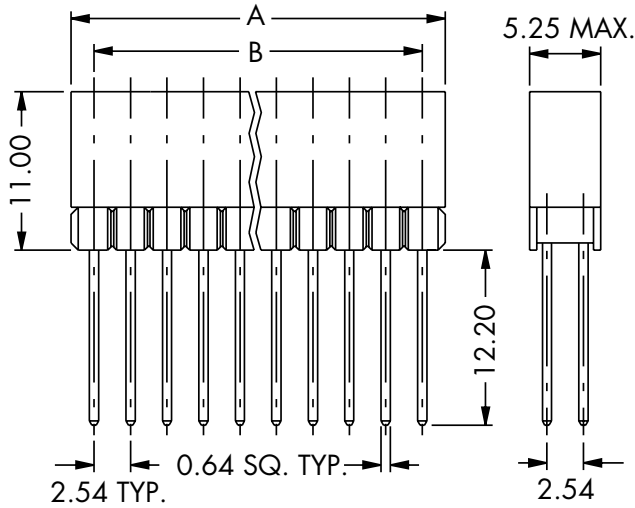
### Mechanical:

Average Insertion Force: 1.1 N per contact  
 Average Withdrawal Force: 0.7N per contact

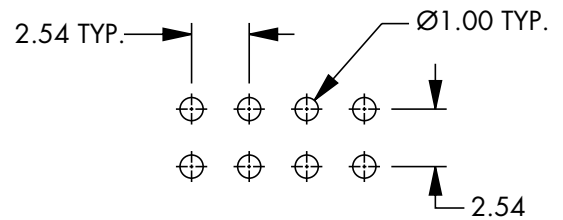
### Environmental:

Temperature Range: -55°C to +105°C

## PC/104 CONNECTOR (Stack Through)

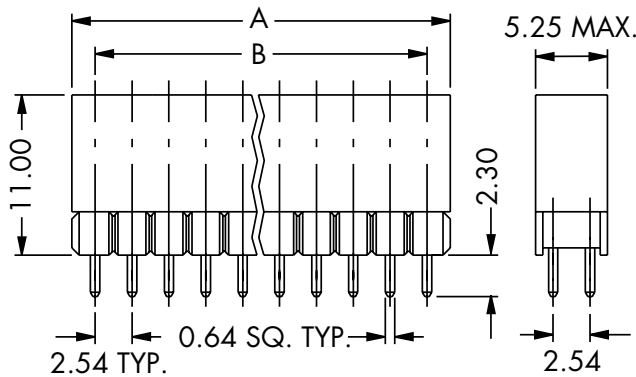


### Recommended PC Board Pattern

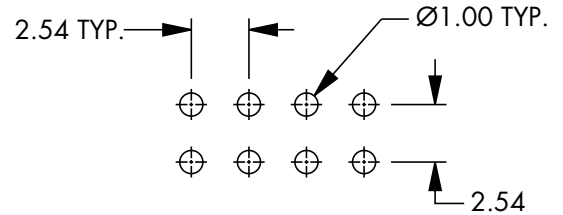


No. of Ways	Dim A	Dim B	Order Code
20 + 20	51.46	48.26	M20-6102005
32 + 32	81.94	78.74	M20-6103205

## PC/104 CONNECTOR (Non Stack Through)

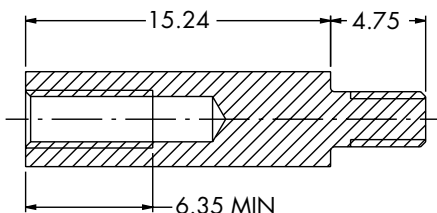


### Recommended PC Board Pattern



No. of Ways	Dim A	Dim B	Order Code
20 + 20	51.46	48.26	M20-6112005
32 + 32	81.94	78.74	M20-6113205

## PC/104 SPACER



Length	Order Code
0.6"/15.24mm	R6104-02

# PC/104 PLUS CONNECTORS

2.00mm Pitch

## SPECIFICATION

### Materials:

Moulding High Temperature Nylon UL94v-0  
 Contacts Phosphor Bronze  
 (M22-6023022 Brass)

### Finish:

Contacts Gold flash over nickel

### Electrical:

Contact Resistance 20 milliohms max.  
 Insulation Resistance 5000 megohms min.  
 Current Rating 1 A ac  
 Voltage Proof 500 v ac

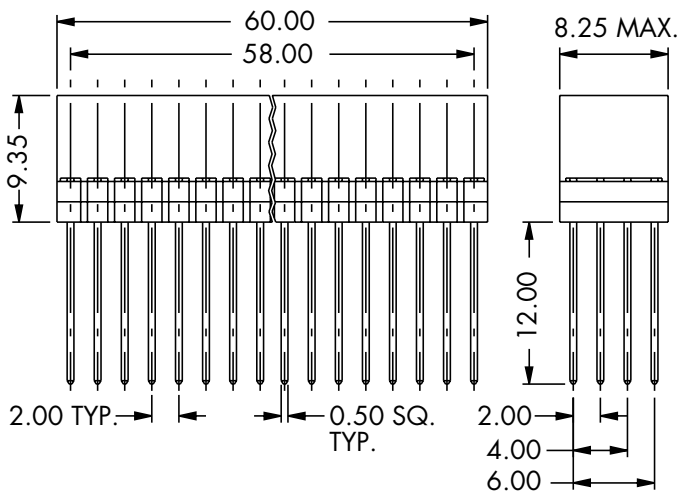
### Mechanical:

Average Insertion Force 1 N  
 per contact  
 (M22-6033022 1.6N)  
 Average Withdrawal Force 0.8N  
 per contact  
 (M22-6033022 1.4N)

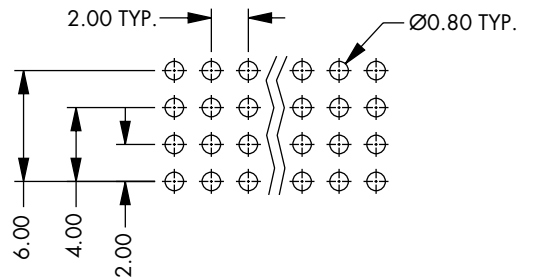
### Environmental:

Temperature Range -40°C to +105°C

## PC/104 PLUS CONNECTOR (Stack Through)

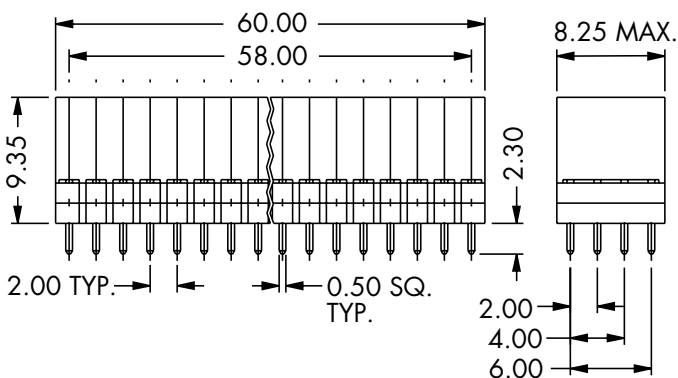


### Recommended PC Board Pattern

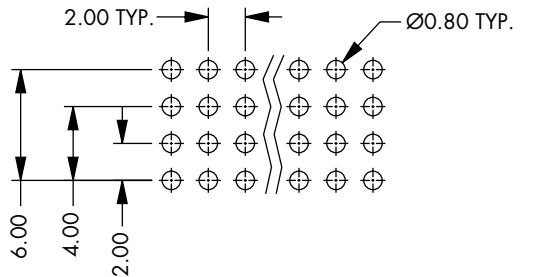


No. of Ways	Order Code
30 X 4	M22-6003005

## PC/104 PLUS CONNECTOR (Non-Stack Through)

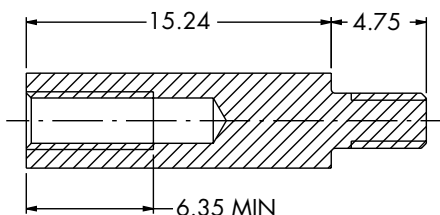


### Recommended PC Board Pattern



No. of Ways	Order Code
30 X 4	M22-6013005

## PC/104 SPACER

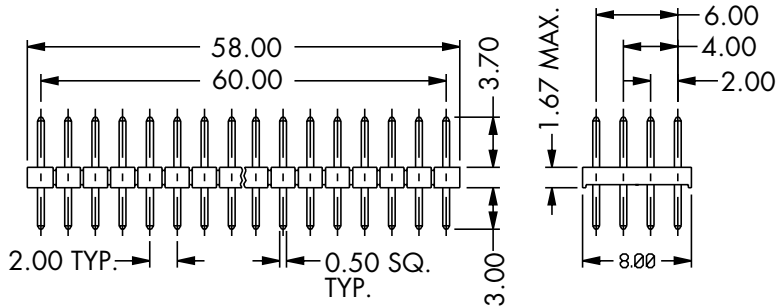


Length	Order Code
0.6"/15.24mm	R6104-02

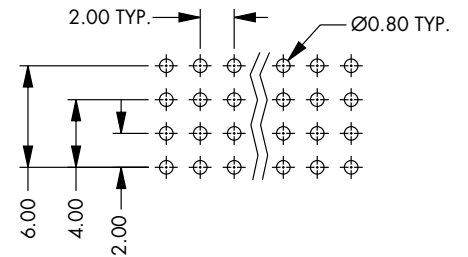
# PC/104 PLUS CONNECTORS

2.00mm Pitch

## PC/104 PLUS POST HEADER

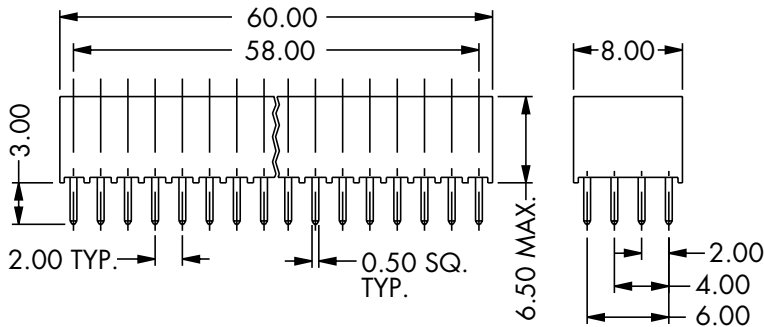


### Recommended PC Board Pattern

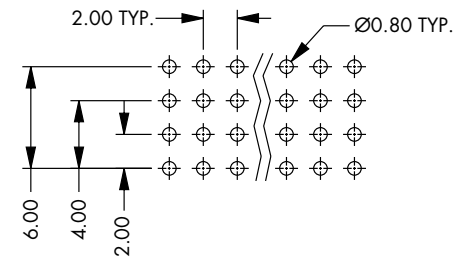


No. of Ways	Order Code
30 X 4	M22-6023022

## PC/104 PLUS POST HEADER RECEPTACLE

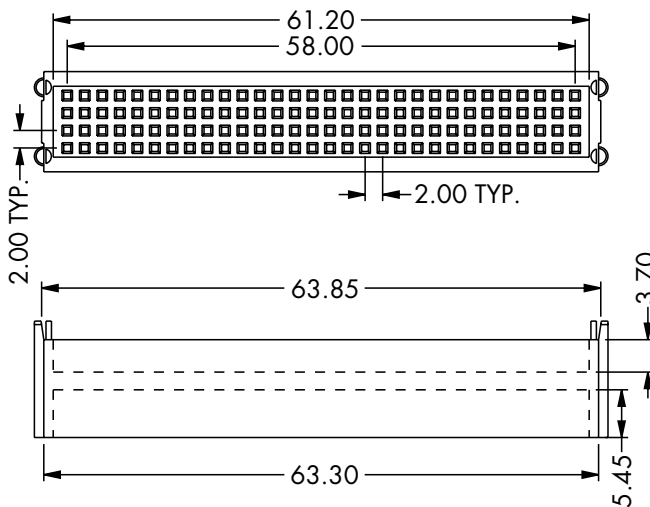


### Recommended PC Board Pattern



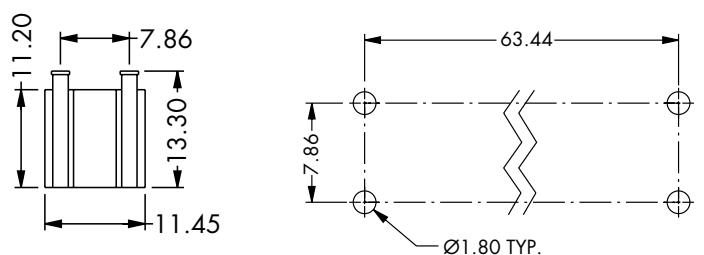
No. of Ways	Order Code
30 X 4	M22-6033022

## PC/104 PLUS SHROUD



- Shroud is used to protect the square tails of stackthrough connectors and is fitted to the underside of the PC board after soldering.
- Shroud ensures alignment of the tails with the mating receptacle.
- Self-retains by latching into the four mounting holes.

### Recommended PC Board Pattern



No. of Ways	Order Code
30 X 4	M22-6043098

PC/104 and PC/104 logo are trademarks of the PC/104 Consortium.